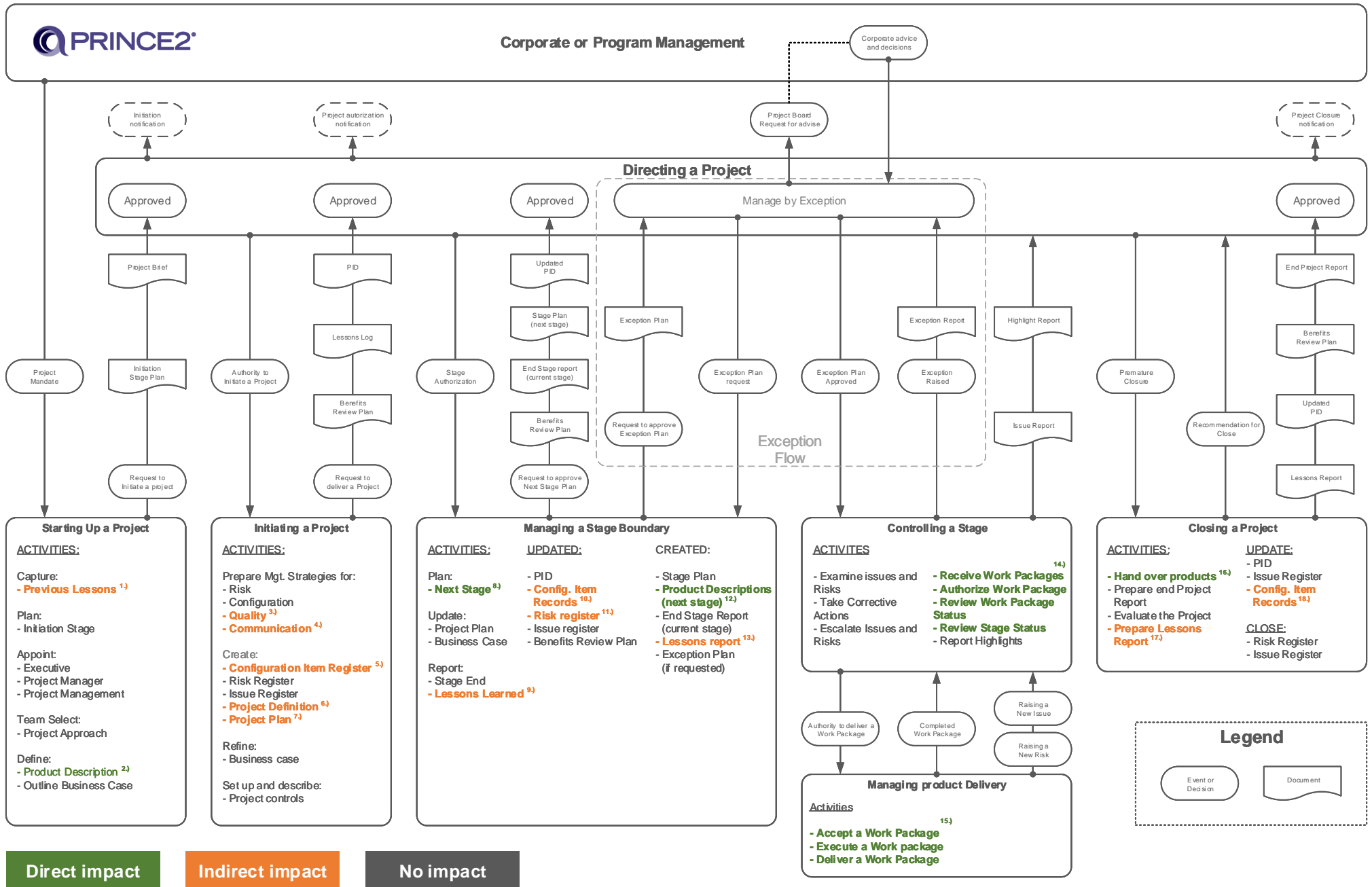


SEC and PRINCE2®



Notes:

- 1.) The product description is handled by both the System descriptions and system structures of SEC.
- 2.) Previous lessons are embedded in the system design by means of the stakeholder workshops in the SEC.
- 3.) QA is made more straight forward, as validation and verification is easy, as the requirements are a fundamental part of the SEC.
- 4.) Communication can benefit from the system breakdown, which makes the communication structured.
- 5.) Configuration items is supported by the agile process handled by the spiral model.
- 6.) The technical part of the project definition is handled by the system breakdown and the capturing of the requirements.
- 7.) Project planning is supported by the clear overview a project gets from the system breakdown structure.
- 8.) The definition and execution of the next stage is an integral part of the SEC.
- 9.) See 1.)
- 10.) Configuration and updates of the system design is an integral part of the SEC, which will make the records easy to make and register.
- 11.) Treatment of technical risks is made clear by the stepwise and agile progress in the spiral model in the SEC.
- 12.) The product descriptions is an integral part of the SEC, as the spiral model matures the design in an unambiguous manner.
- 13.) See 1.)
- 14.) Controlling the stage including receive work packages etc. is exactly what the SEC is designed to do.
- 15.) Managing the product delivery including accept of work package etc. is exactly what the SEC is designed to do.
- 16.) Hand over of products is an integral part of the SEC.
- 17.) See 1.)
- 18.) See 9.)